

Monthly Weather Summary in Thailand August 2022

The monsoon trough lay across Myanmar, upper northern Thailand and upper Laos and it periodically moved southwards to lie over upper northern and upper northeastern parts in addition with prevailing of the moderate to rather active southwest monsoon over the Andaman Sea, Thailand and the Gulf of Thailand almost the month. Besides, there were 2 tropical cyclones having some effects on rainfall in Thailand namely “MULAN” (2207) made landfall over Quang Ninh, Vietnam on August 11 and respectively downgraded into the active low pressure cell over upper northern Thailand and Myanmar on the next time associated with the tropical storm “MA-ON” (2209) made landfall over Maoming, Guangdong province, China and dissipated over upper Laos on August 26. Moreover, the southeasterly wind prevailed over the lower northeastern part during last month. These caused abundant rainfall over upper Thailand with flooding in several places while southern part received plentiful of rain mainly along west coast. The average total rainfall of 275.1 millimeters was measured over Thailand in this month with 12 percent above normal and monthly rainfall was above normal in most part of Thailand i.e. northern part 30.5 mm (13%), northeastern part 19.4 mm (7%), central part 39.7 mm (21%) and eastern part 100.0 mm (35%) except for below normal in southern part (eastern coast) 11.4 mm (9%) and southern part (west coast) 9.6 mm (2%). Mean temperatures in Thailand was slightly above normal.

1–10 August: The monsoon trough lay across Myanmar, upper northern part and upper Laos toward the low pressure cell over the upper South China Sea. The mentioned low pressure cell respectively intensified to the tropical storm “MULAN” (2207) on August 9 associated with the moderate southwest monsoon which prevailed over the Andaman Sea, Thailand and the Gulf of Thailand was strengthened during late period. These caused fairly widespread rain over upper Thailand with heavy to very heavy rainfall in some areas mainly during the second half of the period. The maximum daily rainfall in upper Thailand was 230.0 millimeters at Khao Saming in Trat province on August 7. Floods was reported at Tak, Sukhothai, Lampang, Phitsanulok, Chiang Rai, Pichit, Mae Hong Son, Chiang Mai, Phetchabun, Maha Sarakham, Khon Khen, Nakhon Phanom, Nakhon Ratchasima, Mudahan, Loei, Chonburi, Chantaburi, Nakhon Nayok, Trat and Prachinburi provinces with land slide at Mae Hong Son and Chiang Mai provinces on August 2, at Chiang Rai and Lampang provinces on August 8. In southern part, isolated to scattered rain except for fairly widespread rain with heavy to very heavy rainfall in some areas along west coast on August 1-3 and 6. The highest daily rainfall of 176.8 millimeters was measured at Ko Lanta in Krabi on August 1 with flooding at Krabi and Phang-nga provinces on August 1 and Phuket on August 1-2 and gusty wind occurred at Narathiwat province on August 5-6, at Pattani and Yala provinces on August 6 and Song Khla province on August 8.

11-20 August : Tropical storm “MULAN” (2207) in upper South China Sea made landfall over Quang Ninh in Vietnam on the first day of the period and downgraded into the tropical depression at 07:00 a.m. on the same day. After that, it weakened to the active low pressure cell over upper northern Thailand and Myanmar on August 12 and dissipated on the next time. In addition, the monsoon trough lay across Myanmar, upper northern part and upper Laos and move southward to lie across the Myanmar, upper northern and upper northeastern parts on August 20 toward the low pressure cell over Vietnam, upper Laos and the Gulf of Tonkin since mid-period. Moreover, the prevailing of the southwest monsoon over the Andaman, Thailand and the Gulf of Thailand throughout the period. These caused fairly widespread rain in upper Thailand almost the period with heavy to very heavy rainfall in some places. The highest daily rainfall in upper Thailand was 217.3 millimeters at Mueang in Chiang Rai province on August 11 and floods were reported at Mae Hong Son, Phare, Chiang Rai, Phetchabun, Phitsanulok, Lampang, Pichit, Tak Lamphun, Loei, Maha Sarakham, Chaiyaphum, Si Saket, Khon Khen, Ubon Ratchatani, Nakhon Sawan, Ang Thong, Prachinburi and Sakaeo provinces. In southern part, rainfall was mainly observed during second half of the period with isolated to scattered rain except for fairly widespread rain on August 16-17 along east coast. Isolated light rain was found along the west coast during the first half of the period then increasing rainfall to fairly widespread rain with heavy to very heavy rainfall in some places. The highest daily rainfall of 102.2 millimeters was measured at Mueang in Ranong on August 16.

21-31 August : The monsoon trough lay across Myanmar and upper Laos, it shifted southward to lie across the northern and upper northeastern parts toward the tropical storm “MA-ON” (2209) on August 25. This storm made landfall over Maoming, Guangdong province, China in the morning of August 25. It moved through upper Vietnam and respectively downgraded into the tropical depression and the active low pressured cell over upper Laos on August 26. In addition, the southwest monsoon which prevailed over the Andaman Sea, Thailand and the Gulf of Thailand was weak during the second half of the period and southeasterly wind prevailing the lower northeastern part during this period. These caused rainfall was found upper Thailand mainly during mid-period. Northern part received fairly widespread rain with heavy to very heavy rainfall in some places except for isolate to scattered light to moderate rain on August 23 and 28-31. Northeastern part obtained isolated to scattered rain except for fairly widespread rain on August 25, 26 and 29. Central part was reported isolated to scattered rain except for fairly widespread rain on August 25, 26 and 29 while fairly widespread rain, heavy rainfall in several areas with very heavy rainfall in some areas was found in earthen part except for isolated to scattered rain on August 21-23 and 30. The highest daily rainfall in upper Thailand was 287.5 millimeters at Jae Hom in Lampang on August 25. Floods occurred at Lampang, Phetchabun, Chiang Rai, Mae Hong Son, Lamphun, Tak, Phitsanulok, Khon Khen, Maha Salakam, Buriram, Udon Thani, Nakhon Ratchasima, Phra Nakhon Si Ayuthaya, Chantaburi, Sakeao, Prachinburi, Nakhon Nayok and Rayong provinces during August 22-28 and gusty wind at Phayao, Lampang, Lamphun, Sukhothai, Kamphaeng Phet, Udon Thani, Maha Salakam, Karasin, Prachinburi and Trat provinces on August

25, at Mae Hong Son and Ang Thong provinces on August 26. In southern part, abundant rainfall was mainly observed along west coast with fairly widespread rain almost the period with heavy to very heavy rainfall in some places. Fairly widespread rain was found along the east coast on August 25-27 and 29 while isolated to scattered rain on the rest day of the period. The maximum daily rainfall was 140.0 millimeters at Kapoe in Ranong on August 21 and floods occurred at Phang-nga and Phuket provinces on August 22, at Phetburi, Phuket and Krabi provinces on August 26.

-
- Note :**
1. Rainfall, temperatures and natural disasters in this report were updated up to September 1, 2022.
 2. “MULAN” mean magnolia blossom or wood orchid contributed by China
 3. “MA-ON” mean horse saddle contributed by Hong Kong (Special administrative regions of China)

Climatological Center
Meteorological Development Division
Meteorological Department

Monthly Current Report
Rainfall and Accumulative Rainfall
August 2022

Northern Thailand

Station	Temperature (°c)		Rainfall (mm)		Accumulative rainfall (mm) Since 1 January	
	Mean	Above or below normal	Actual	Above or below normal	Actual	Above or below normal
Chiang Rai	27.5	0.9	505.8	132.9	1513.1	253.6
Mae Hong Son	27.6	0.6	353.1	94.6	1110.6	181.4
Phayao	27.6	0.8	157.6	-58.1	1018.8	242.3
Chiang Mai	27.7	0.8	262.1	38.8	1215.3	462.1
Tha Wang Pha	27.7	0.7	353.7	24.2	1402.0	275.1
Nan	27.8	0.4	245.4	-46.1	1118.4	148.8
Lamphun	27.6	0.2	312.1	118.2	940.4	245.7
Lampang	27.9	0.4	203.0	0.3	800.7	41.7
Mae Sariang	27.0	0.7	233.0	7.2	907.1	61.9
Phrae	27.7	0.3	193.0	-46.0	919.9	48.3
Uttaradit	28.3	0.3	254.8	-34.6	963.0	-35.3
Bhumibol Dam	27.9	-0.2	235.6	116.0	769.9	170.4
Tak	28.1	0.1	229.6	111.5	862.2	264.2
Mae Sot	26.5	0.7	319.2	-34.4	1094.6	-103.5
Umphang	24.9	0.5	328.0	67.1	1351.5	302.8
Phitsanulok	28.3	0.1	312.1	71.4	1060.0	193.0
Lom Sak	27.7	0.3	165.4	-39.3	633.0	-106.1
Phetchabun	27.7	0.2	209.0	-4.4	864.7	29.0
Wichian Buri	28.3	0.1	228.5	7.0	1121.2	265.8
Kamphaeng Phet	28.0	0.1	265.8	85.5	1280.2	461.1
Over the area	27.6	0.4	268.3	30.5 13%	1047.3	170.0 19%

Northeastern Thailand

Station	Temperature (°c)		Rainfall (mm)		Accumulative rainfall (mm) Since 1 January	
	Mean	Above or below normal	Actual	Above or below normal	Actual	Above or below normal
Nong Khai	28.4	0.7	329.6	-16.9	1703.7	393.9
Loei	27.4	0.2	237.9	33.0	1100.4	226.4
Udon Thani	28.0	0.2	315.3	16.4	1112.1	30.8
Nakhon Phanom	27.8	0.6	560.8	24.1	1514.3	-435.3
Sakon Nakhon	27.7	0.2	182.4	-142.4	986.6	-352.6
Mukdahan	27.8	0.3	373.9	36.0	1144.0	-25.6
Khon Kaen	27.8	0.2	272.7	50.5	1123.7	267.0
Kosum Phisai	28.4	0.3	336.4	87.3	1126.6	186.4
Roi Et	28.3	0.3	241.9	-20.8	1242.5	248.5
Chaiyaphum	27.9	0.3	205.1	-10.1	1024.9	243.5
Ubon Ratchathani	27.8	0.0	557.2	265.8	1629.5	458.8
Tha Tum	27.9	-0.4	144.2	-87.1	665.7	-280.7
Surin	27.9	0.2	328.1	57.4	1441.4	420.7
Nakhon Ratchasima	28.1	-0.2	125.2	-52.8	876.2	149.3
Chok Chai	28.0	0.0	200.2	49.7	829.3	165.9
Nang Rong	27.6	-0.3	212.8	20.1	1424.2	622.3
Over the area	27.9	0.1	289.0	19.4 7%	1184.1	145.0 14%

- NOTES :
- 1) Mean temperature is the average of daily dry-bulb temperature
 - 2) "T" is trace, rainfall amount less than 0.1 mm.
 - 3) "blank" is incomplete data.
 - 4) Temperature and rainfall are preliminary data.

Monthly Current Report
Rainfall and Accumulative Rainfall
August 2022

Central Thailand

Station	Temperature (°c)		Rainfall (mm)		Accumulative rainfall (mm) Since 1 January	
	Mean	Above or below normal	Actual	Above or below normal	Actual	Above or below normal
Nakhon Sawan	28.6	0.0	233.2	55.0	1083.7	341.2
Bua Chum	28.3	0.2	169.6	-14.8	928.1	222.4
Lop Buri	28.4	-0.1	303.9	152.4	666.6	11.3
Suphan Buri	28.9	0.2	223.5	105.7	890.2	367.8
Thong Pha Phum	26.8	0.3	285.9	-59.0	1259.4	-61.6
Kanchanaburi	28.9	0.3	101.4	0.8	743.8	167.2
Bangkok Airport	28.6	-0.5	183.6	0.2	1144.4	207.4
Bangkok Metropolis	28.6	-0.4	304.7	77.6	1367.2	345.8
Over the area	28.4	0.0	225.7	39.7 21%	1010.4	200.0 25%

Eastern Thailand

Station	Temperature (°c)		Rainfall (mm)		Accumulative rainfall (mm) Since 1 January	
	Mean	Above or below normal	Actual	Above or below normal	Actual	Above or below normal
Prachin Buri	28.2	-0.2	600.6	243.8	1470.8	248.0
Kabin Buri	27.6	-0.2	365.1	97.8	1192.3	126.1
Aranyaprathet	28.1	0.0	371.3	170.7	1086.1	211.8
Chon Buri	29.1	-0.2	187.2	27.5	993.5	222.4
Ko Sichang	28.0	-0.8	165.8	34.3	854.5	190.6
Pattaya	28.3	-0.2	134.2	43.0	782.1	182.7
Sattahip	28.6	-0.4	231.6	136.9	1118.3	392.9
Rayong	28.7	-0.1	205.5	77.3	855.3	-34.5
Chanthaburi	27.5	-0.3	583.0	126.8	2082.6	-32.5
Khlong Yai	27.1	-0.1	1011.9	42.2	3609.3	-50.2
Over the area	28.1	-0.3	385.6	100.0 35%	1404.5	145.7 12%

- NOTES :
- 1) Mean temperature is the average of daily dry-bulb temperature
 - 2) "T" is trace, rainfall amount less than 0.1 mm.
 - 3) "blank" is incomplete data.
 - 4) Temperature and rainfall are preliminary data.

Monthly Current Report
Rainfall and Accumulative Rainfall
August 2022

Southern Thailand, east coast

Station	Temperature (°c)		Rainfall (mm)		Accumulative rainfall (mm) Since 1 January	
	Mean	Above or below normal	Actual	Above or below normal	Actual	Above or below normal
Phetchaburi	28.8	0.0	108.0	17.3	625.3	159.5
Hua Hin	28.7	0.1	75.1	8.0	722.8	251.8
Prachuap Khiri Khan	28.0	0.1	151.9	52.5	1106.9	481.9
Chumphon	28.1	0.8	57.0	-142.2	1476.2	396.1
Surat Thani	27.7	0.4	39.0	-88.3	1118.2	315.5
Ko Samui	28.7	0.3	91.0	-11.2	1447.2	573.0
Nakhon Si Thammarat	28.4	0.5	137.1	2.1	2074.3	956.7
Songkhla	28.5	0.2	42.9	-94.9	1005.7	216.1
Hat Yai Airport	27.5	0.1	153.6	29.8	1143.0	357.4
Pattani Airport	28.1	0.4	198.0	51.0	1233.7	437.6
Narathiwat	27.9	0.3	232.1	50.6	1817.9	749.0
Over the area	28.2	0.3	116.9	-11.4 -9%	1251.9	444.8 55%

Southern Thailand, west coast

Station	Temperature (°c)		Rainfall (mm)		Accumulative rainfall (mm) Since 1 January	
	Mean	Above or below normal	Actual	Above or below normal	Actual	Above or below normal
Ranong	27.5	0.5	394.6	-376.9	2837.5	-56.9
Takua Pa	27.4	0.1	613.5	43.5	2797.9	400.6
Phuket	28.5	0.2	446.2	137.5	1701.0	376.1
Phuket Airport	28.4	0.3	410.7	32.5	1619.7	30.5
Ko Lanta	27.8	-0.4	639.4	297.4	1776.6	387.0
Trang Airport	27.5	0.3	229.8	-56.2	1678.2	372.9
Satun	27.8	0.3	133.3	-144.5	1633.0	278.0
Over the area	27.8	0.1	409.6	-9.6 -2%	2006.3	255.4 15%

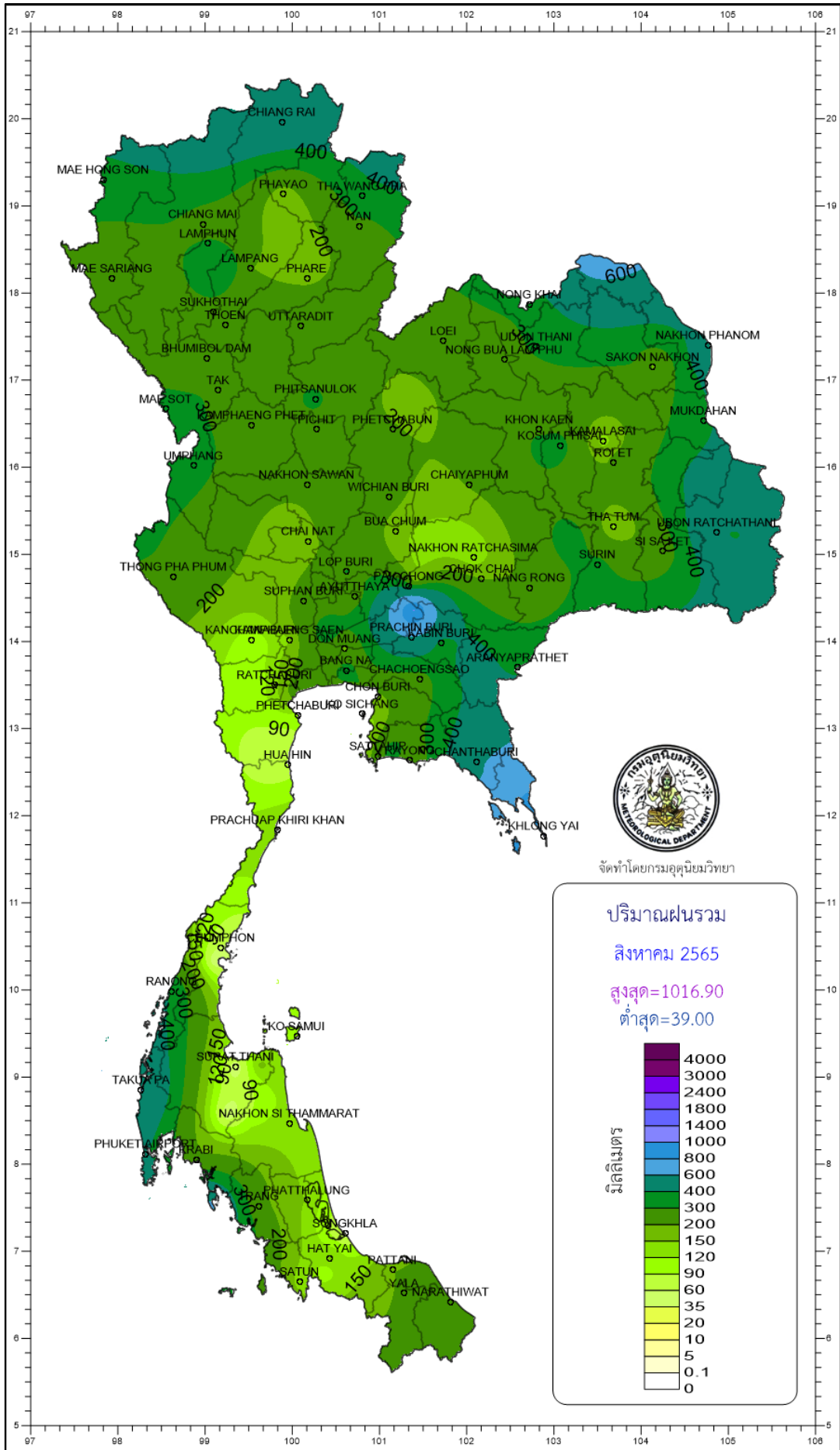
- NOTES :
- 1) Mean temperature is the average of daily dry-bulb temperature
 - 2) "T" is trace, rainfall amount less than 0.1 mm.
 - 3) "blank" is incomplete data.
 - 4) Temperature and rainfall are preliminary data.

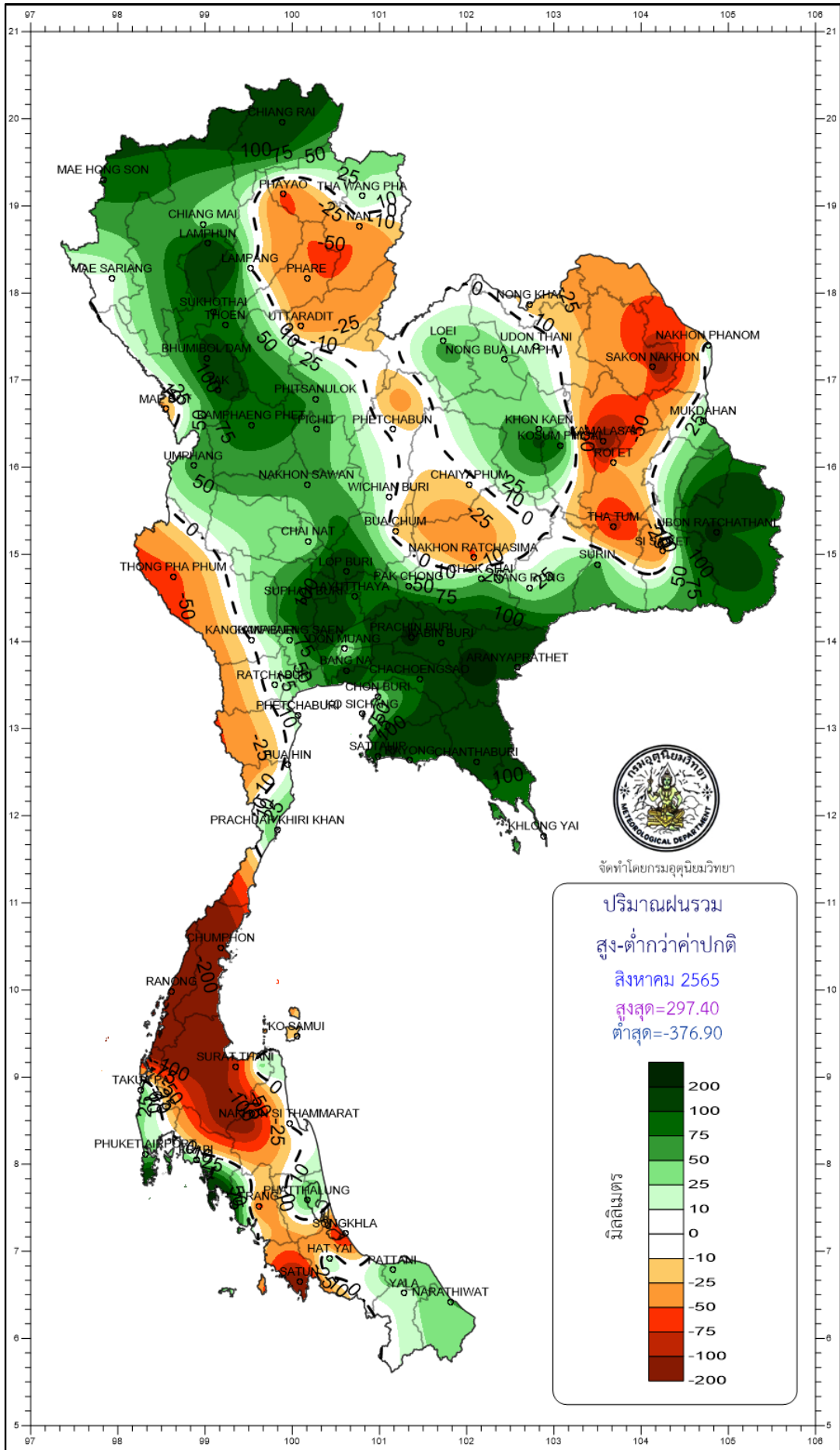
Monthly Current Report

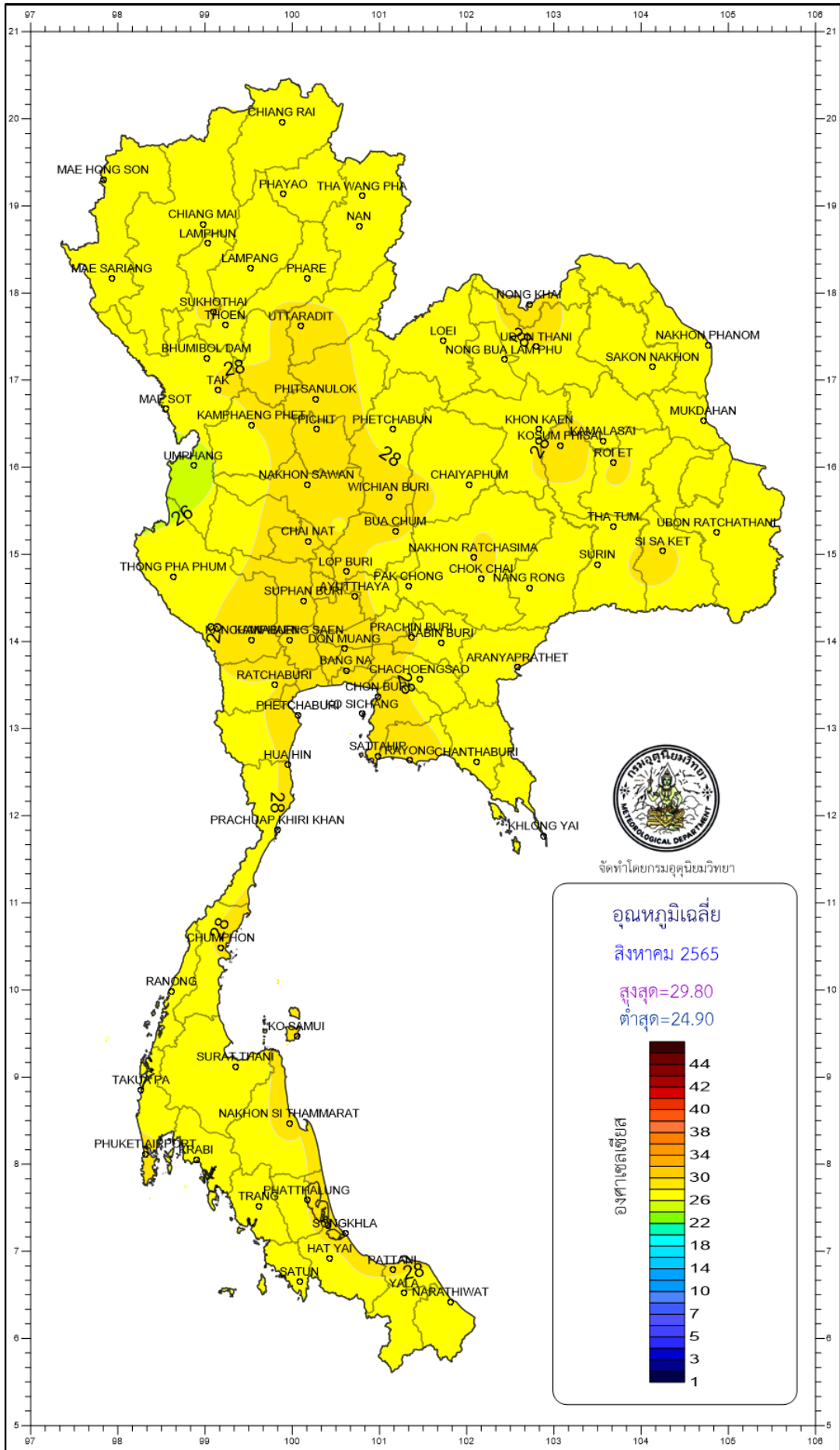
August 2022

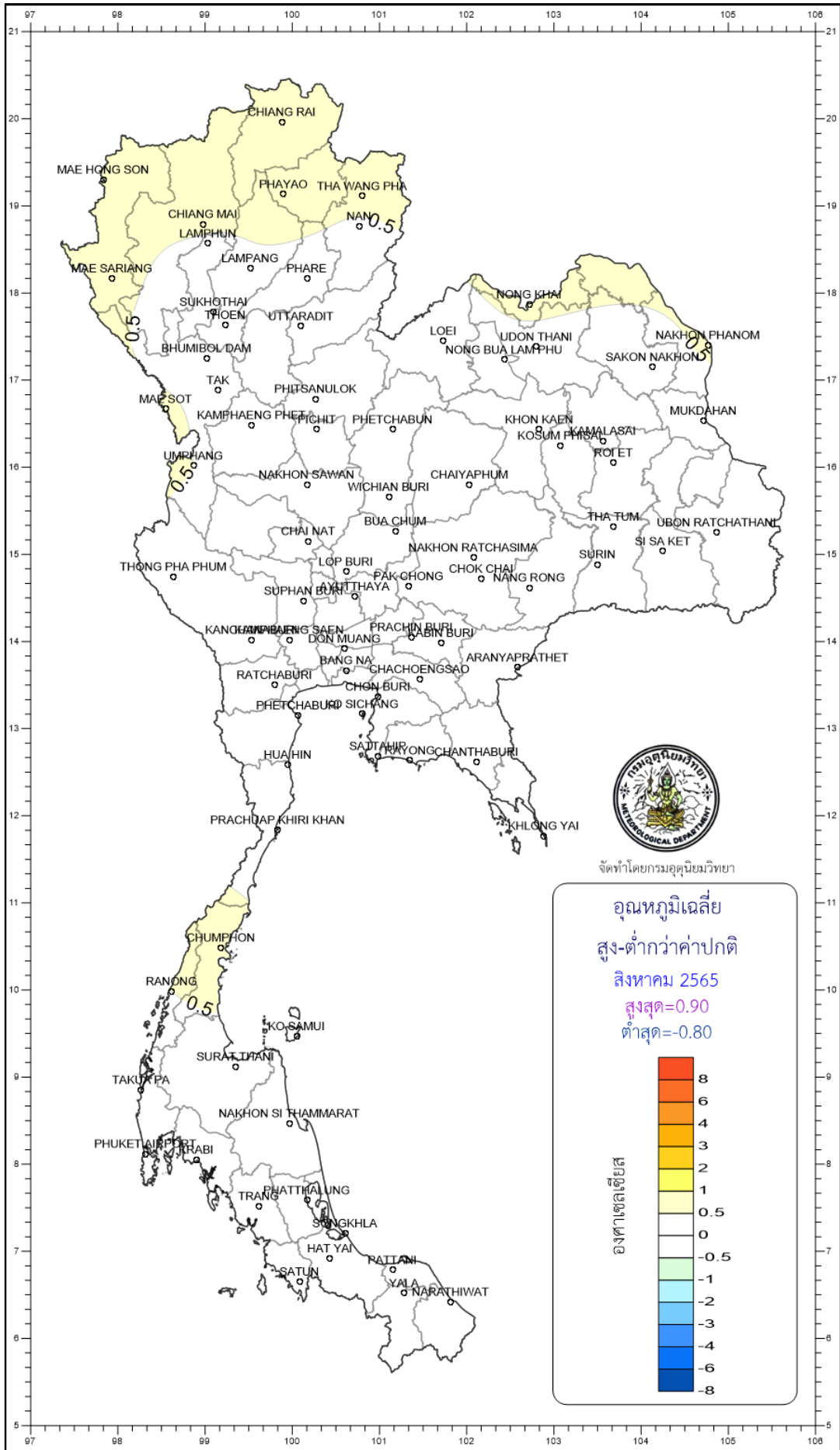
Region	Station	Temperature (°c)		Rainfall (mm)		Accumulative rainfall (mm) Since 1 January	
		Mean	Above or below normal	Actual	Above or below normal	Actual	Above or below normal
North	Chiang Rai	27.5	0.9	505.8	132.9	1513.1	253.6
	Mae Hong Son	27.6	0.6	353.1	94.6	1110.6	181.4
	Phayao	27.6	0.8	157.6	-58.1	1018.8	242.3
	Chiang Mai	27.7	0.8	262.1	38.8	1215.3	462.1
	Tha Wang Pha	27.7	0.7	353.7	24.2	1402.0	275.1
	Nan	27.8	0.4	245.4	-46.1	1118.4	148.8
	Lamphun	27.6	0.2	312.1	118.2	940.4	245.7
	Lampang	27.9	0.4	203.0	0.3	800.7	41.7
	Mae Sariang	27.0	0.7	233.0	7.2	907.1	61.9
	Phrae	27.7	0.3	193.0	-46.0	919.9	48.3
	Uttaradit	28.3	0.3	254.8	-34.6	963.0	-35.3
	Bhumibol Dam	27.9	-0.2	235.6	116.0	769.9	170.4
	Tak	28.1	0.1	229.6	111.5	862.2	264.2
	Mae Sot	26.5	0.7	319.2	-34.4	1094.6	-103.5
	Umphang	24.9	0.5	328.0	67.1	1351.5	302.8
	Phitsanulok	28.3	0.1	312.1	71.4	1060.0	193.0
	Lom Sak	27.7	0.3	165.4	-39.3	633.0	-106.1
	Phetchabun	27.7	0.2	209.0	-4.4	864.7	29.0
	Wichian Buri	28.3	0.1	228.5	7.0	1121.2	265.8
	Kamphaeng Phet	28.0	0.1	265.8	85.5	1280.2	461.1
Northeast	Nong Khai	28.4	0.7	329.6	-16.9	1703.7	393.9
	Loei	27.4	0.2	237.9	33.0	1100.4	226.4
	Udon Thani	28.0	0.2	315.3	16.4	1112.1	30.8
	Nakhon Phanom	27.8	0.6	560.8	24.1	1514.3	-435.3
	Sakon Nakhon	27.7	0.2	182.4	-142.4	986.6	-352.6
	Mukdahan	27.8	0.3	373.9	36.0	1144.0	-25.6
	Khon Kaen	27.8	0.2	272.7	50.5	1123.7	267.0
	Kosum Phisai	28.4	0.3	336.4	87.3	1126.6	186.4
	Roi Et	28.3	0.3	241.9	-20.8	1242.5	248.5
	Chaiyaphum	27.9	0.3	205.1	-10.1	1024.9	243.5
	Ubon Ratchathani	27.8	0.0	557.2	265.8	1629.5	458.8
	Tha Tum	27.9	-0.4	144.2	-87.1	665.7	-280.7
	Surin	27.9	0.2	328.1	57.4	1441.4	420.7
	Nakhon Ratchasima	28.1	-0.2	125.2	-52.8	876.2	149.3
	Chok Chai	28.0	0.0	200.2	49.7	829.3	165.9
Nang Rong	27.6	-0.3	212.8	20.1	1424.2	622.3	
Central	Nakhon Sawan	28.6	0.0	233.2	55.0	1083.7	341.2
	Bua Chum	28.3	0.2	169.6	-14.8	928.1	222.4
	Lop Buri	28.4	-0.1	303.9	152.4	666.6	11.3
	Suphan Buri	28.9	0.2	223.5	105.7	890.2	367.8
	Thong Pha Phum	26.8	0.3	285.9	-59.0	1259.4	-61.6
	Kanchanaburi	28.9	0.3	101.4	0.8	743.8	167.2
	Bangkok Airport	28.6	-0.5	183.6	0.2	1144.4	207.4
	Bangkok Metropolis	28.6	-0.4	304.7	77.6	1367.2	345.8
East	Prachin Buri	28.2	-0.2	600.6	243.8	1470.8	248.0
	Kabin Buri	27.6	-0.2	365.1	97.8	1192.3	126.1
	Aranyaprathet	28.1	0.0	371.3	170.7	1086.1	211.8
	Chon Buri	29.1	-0.2	187.2	27.5	993.5	222.4
	Ko Sichang	28.0	-0.8	165.8	34.3	854.5	190.6
	Pattaya	28.3	-0.2	134.2	43.0	782.1	182.7
	Sattahip	28.6	-0.4	231.6	136.9	1118.3	392.9
	Rayong	28.7	-0.1	205.5	77.3	855.3	-34.5
	Chanthaburi	27.5	-0.3	583.0	126.8	2082.6	-32.5
	Khlong Yai	27.1	-0.1	1011.9	42.2	3609.3	-50.2
South (East Coast)	Phetchaburi	28.8	0.0	108.0	17.3	625.3	159.5
	Hua Hin	28.7	0.1	75.1	8.0	722.8	251.8
	Prachuap Khiri Khan	28.0	0.1	151.9	52.5	1106.9	481.9
	Chumphon	28.1	0.8	57.0	-142.2	1476.2	396.1
	Surat Thani	27.7	0.4	39.0	-88.3	1118.2	315.5
	Ko Samui	28.7	0.3	91.0	-11.2	1447.2	573.0
	Nakhon Si Thammarat	28.4	0.5	137.1	2.1	2074.3	956.7
	Songkhla	28.5	0.2	42.9	-94.9	1005.7	216.1
	Hat Yai Airport	27.5	0.1	153.6	29.8	1143.0	357.4
	Pattani Airport	28.1	0.4	198.0	51.0	1233.7	437.6
	Narathiwat	27.9	0.3	232.1	50.6	1817.9	749.0
South (West Coast)	Ranong	27.5	0.5	394.6	-376.9	2837.5	-56.9
	Takua Pa	27.4	0.1	613.5	43.5	2797.9	400.6
	Phuket	28.5	0.2	446.2	137.5	1701.0	376.1
	Phuket Airport	28.4	0.3	410.7	32.5	1619.7	30.5
	Ko Lanta	27.8	-0.4	639.4	297.4	1776.6	387.0
	Trang Airport	27.5	0.3	229.8	-56.2	1678.2	372.9
	Satun	27.8	0.3	133.3	-144.5	1633.0	278.0
	Over the area	27.9	0.1	275.1	28.5	1247.7	214.7
					12%		21%

- NOTES :
- 1) Mean temperature is the average of daily dry-bulb temperature
 - 2) "T" is trace, rainfall amount less than 0.1 mm.
 - 3) "blank" is incomplete data.
 - 4) Temperature and rainfall are preliminary data.









จัดทำโดยกรมอุตุนิยมวิทยา

อุณหภูมิเฉลี่ย
สูง-ต่ำกว่าค่าปกติ
สิงหาคม 2565
สูงสุด=0.90
ต่ำสุด=-0.80

องศาเซลเซียส

8
6
4
3
2
1
0.5
0
-0.5
-1
-2
-3
-4
-6
-8

